

# IBUILT™

Engineered Wood Products

October 2024

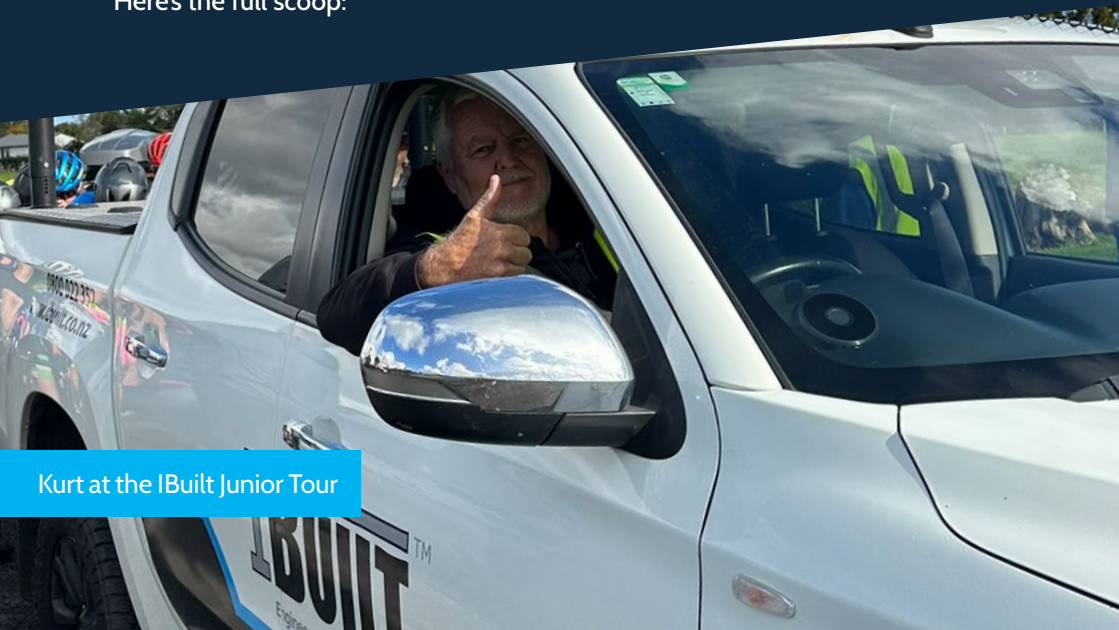
## From big changes to new arrivals

There are signs residential construction may be turning a corner. Meanwhile, many Kiwis are looking to renovate – a way to make the most of what they have, with a focus on sustainable building practices.

The IBuilt team has kept on top of things, cranking out our engineered wood products and plywood.

We've recently hired the talented Tamsyn Noakes as one of our account managers and Kurt Van Breda as technical support representative, who have both hit the ground running. Our new primed cladding has just landed in the warehouse, ready to tackle whatever Mother Nature throws at it. And here's something we're really proud of – our support of builder mental health and the effort of junior athletes.

Here's the full scoop:



Kurt at the IBuilt Junior Tour

## IBuilt provides a complete design and supply midfloor system



### HYNE BEAM15 GLT

Pre-cambered glue laminated timber for high strength beams in load bearing application.



### NELSON PINE LVL

Available in 45mm, 63mm and 90mm thicknesses. LVL frames openings and voids or used as minor load bearing members.



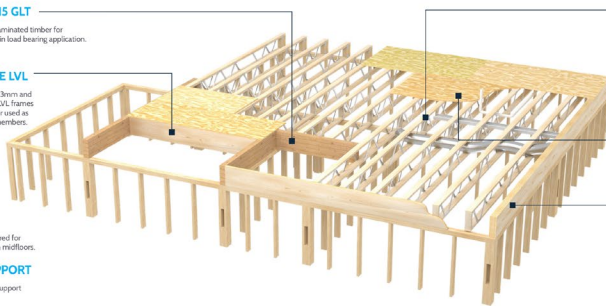
### PRODUCER STATEMENT

PS1 supplied as required for Multistrut and I-beam midfloors.



### ON SITE SUPPORT

Training and on site support available as required.



### IBUILT MULTISTRUT & I-JOISTS

Light weight and efficient, open web. Multistrut joists allow complete access for plumbing and services. I-joists can be supplied up to 12m for a simple and fast alternative to LVL or solid timber.

### IBUILT FLOORPLY4™

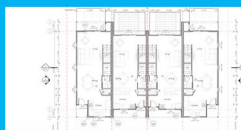
All flooring types are compatible with Multistrut and I-joists, including Built's own high strength Floorply4™.

### IBUILT RIMBOARD

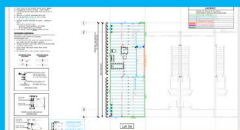
Use I-built Rimboard to prevent the possibility of differential shrinkage compared to conventional timber.

### HARDWARE

A full range of timber hangers, brackets, nails and screws supplied for all typical connections.



Design process



Efficient installation



Quality materials



Supply and support



### Design process

Coordinating with the architect to provide a midfloor layout plan which is quoted through a merchant of choice. Turnaround time of 5-10 days.



### Efficient installation

Clear layout plans with labelled component schedules. Members supplied with a small trim allowance minimizing on-site waste.



### Quality materials

Sourced from reputable manufacturers, ensuring compliance with the New Zealand Building Code.



### Supply and support

Once supplied through the merchant, the I-built team can provide on site training and follow up support to the builder.

IBuilt can facilitate a complete design, quote and supply of all your timber and hardware components.

**IBUILT**<sup>TM</sup>  
MIDFLOOR

## Product Updates

### MIDFLOOR DESIGN AND SUPPLY GUIDE GETS A HELPFUL REFRESH

One of the big changes in the guide is a detailed spread clearly showing all the products available in the midfloor design package, including Hyne Beam 15, Nelson Pine LVL, IBuilt Multistrut, and the new JJ-IJoist.

Once you have figured out what will work best for your project, the guide details the support available from start to finish ensuring everything is precisely specified - avoiding unnecessary waste, saving time on-site, and making your build more efficient and cost-effective.

The guide also highlights the support available. If you are new to these products or just need some assistance, we can include training and onsite support to ensure everything goes to plan. In short, our design and supply midfloor system is designed to reduce the stress of midfloor construction, giving you the tools and support you need to do the job right.

For more information, [visit the I-Built Design & Supply Service website](#) or [contact NZ Wood Products directly](#).



## Why choosing certified timber matters – Simon Dorries, CEO, Responsible Wood

As a major timber user, the design and construction industry should push for greener materials – that’s the opinion of Simon Dorries, CEO of Responsible Wood.

IBuilt partnered with Architectural Designers New Zealand (ADNZ) to host Simon as he discussed the use of certified timber, protecting our forests, and supporting sustainability with ADNZ members.

Simon explained that globally, only around 11% of forests are certified. 70% of New Zealand’s and 95% of Australia’s forests are certified, meaning they meet high environmental and social standards. This drive for certification has come from a mix of legislation, government procurement, public concern, and increased demand for sustainable products.

And that’s where the industry comes in. Simon urged everyone to ensure that any timber they specify is responsibly sourced. He recommended using the Chain of Custody system to track timber from the forest to the final product.

New Zealand Wood has held this Chain of Custody certification for both PEFC and FSC® for over 10 years.

Thank you to Simon for highlighting this important issue and showing us how we can all keep contributing to a greener future.





## Introducing StrongPly14® and FloorPly14®

### NEW ZEALAND'S STRONGEST-RATED PINE PLYWOOD

Did you notice our new trademarked name? Introducing StrongPly14® and FloorPly14®, New Zealand's strongest-rated pine plywood. It's still the same top-tier strength and reliability you've come to expect from our F14 structural plywood – just with new names.

Both products are available in untreated, and CCA, CD or DD grade. Rotary-peeled veneers from plantation-grown hoop pine are glued with a phenolic resin to form a structural A-Bond. The veneer's 90-degree orientation gives a balanced F14 structural rating and stiffness along and across the grain. Square edge and tongue and groove are available in 2.4m lengths, from 15mm to 25mm. Square-edge in 7mm, 9mm and 12mm are available on request, with longer lead times.

### INTRODUCING OUR NEW STRUCTURAL PLYWOOD GUIDE

In our updated Structural Plywood Guide, you'll find new bracing information for our Selex plywood sheets. There are detailed structural flooring and roofing span tables to assist with your projects. We've also clarified our face grade information to make understanding the quality and characteristics of each face easier.

[Explore these updates in the latest guide.](#)

## Elevate Your Construction Game with JJ-Ijoist

The long-awaited Ijoists have arrived – the JJ-Ijoist is an engineered composite 'I-joist' manufactured by James Jones and Sons Ltd (UK) that offers several advantages over traditional structural timber beams.

Constructed from high-grade finger-jointed Scots Pine for the top and bottom flanges and an Oriented Strand Board (OSB) webbing, I-joists allow large holes to be cut for ducting, plumbing, and cabling.

Treated with Koppers FramePro™ preservative (Boron) treatment, I-joists are suitable for all hazard class H1.2 applications.

Lightweight and easy to install, available in two section sizes (240 & 300mm) with lengths up to 12m, you will find the JJ-Ijoist will be perfect for your next midfloor or rafter project.

[Check out the new JJ-Ijoist on our website](#) or [contact us today](#).





BEAM

15

## New superpowers for Beam 15

Big news – our Beam 15 lintel span flyer has just been updated with improved strength figures. After continual testing and data analysis, Hyne has recalculated the strength of Beam 15.

Modulus of elasticity (MOE) and bending values are generally the two main design properties that govern deflection. These have been increased to 15.5 MPa and 38Mpa, (up from 14.8MPa and 36MPa) respectively. Combined with the pre-camber, this gives the Beam 15 superior performance when directly compared with other LVL16 options in similar applications.

Technical Manager Bevan Snookes adds a caution:

“The designer or engineer should be made aware of the substitution or ask us for a design check and report.”

Check out the new span tables and details in our [updated flyer](#).

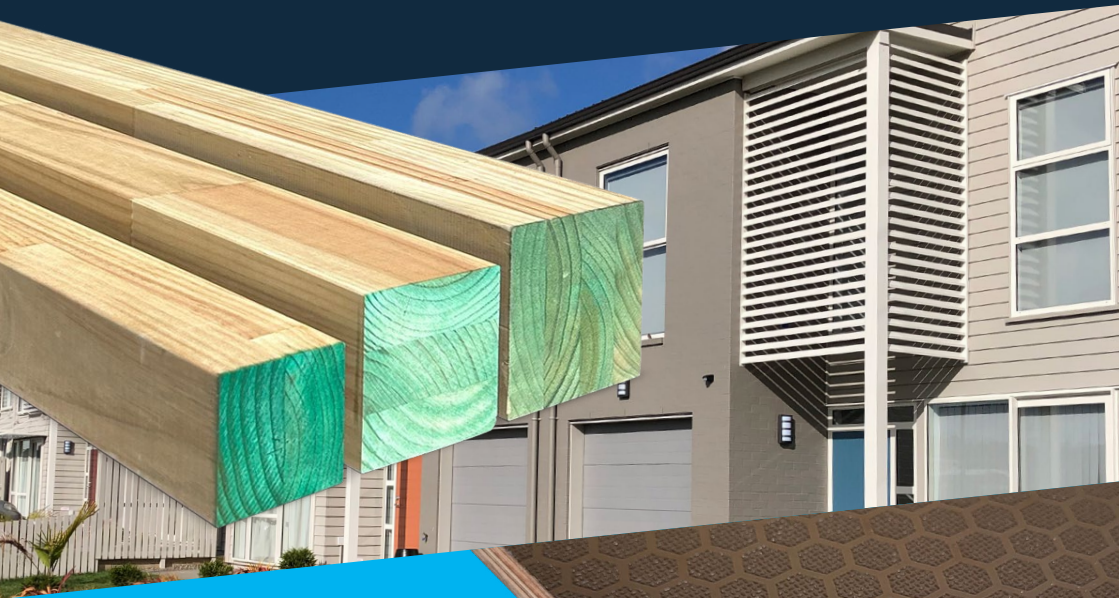


## More choices in GL8 Posts

We have added to our GL8 posts with Woodspan posts. These posts are made with finger-jointed, glue-laminated radiata pine and treated with MCA to hazard class H5 in accordance with NZS3640:2003. They're available in lengths from 2.4 to 6.0m in 88 x 88mm, 112 x 112mm and 135 x 135mm.

The full range is carried in stock and comes with a product assurance supplier statement (pass™)

[Find out more about GL8 Posts.](#)



## Trailer decking (F17)

Our trailer decking now features a new honeycomb tread pattern for better grip and safety. It's a practical choice for a high-strength, slip-resistant plywood trailer decking solution.

## MDF V-Grooved Primed

Our MDF V-grooved panels are now available in a pre-primed option, making painting easier and faster. Made from sustainably grown radiata pine, these panels are ready to paint and have a sleek look with V-grooves spaced at 100mm. They're also simple to cut and install – no extra prep work.

[Check them out here.](#)

## CoreClad™ Primed

Released at the end of 2023, CoreClad™ Primed plywood cladding is made from high-strength plantation pine and treated to the core. Sheets of up to 3m in length are available with a pre-primed face and edge. With no requirement to re-treat cut ends, CoreClad™ Primed removes several steps from the cladding process.

Find out more about [CoreClad™ Primed](#).

### Benefits of CoreClad™ primed:

- Eliminates the need for a primer coat to be applied once installed, saving time.
- Once installed, the primer provides protection against moisture, allowing topcoats to be applied sooner.
- Face, edges and bottom 150mm of the back of the sheet are fully primed, allowing for faster onsite installation.
- Can be painted immediately after installation.







## Sponsorships

### YOUNG CYCLISTS SHINE AT THE IBUILT JUNIOR CYCLING TOUR

The IBuilt Junior Cycling Tour, now in its second year, was an awesome event full of young cycling talent. Held by the Auckland School Cycling Club (ASC) over a weekend in June, this tour is the biggest of its kind in New Zealand. It's a real test for these young athletes, who battle through five stages: a hill climb, individual time trial, kermesse, and two road races. The tour attracted over 200 young cyclists competing in the Under 15, Under 17 and Under 19 categories. It's a key event for spotting future stars, with many previous riders having gone on to compete in world and national championships.

This year's standout performers included Bradley Bingham and Emily Cameron in the Y7/8 category, Carter Paine and Charlotte Treadgold in the Under 15s, Max Allen and Neve McKenzie in the Under 17s, and Joshua Cavanagh and Alex Rawlinson in the Under 19s. The IBuilt Junior Cycling Tour continues to be a key platform for young cyclists, showcasing their skills and potential on a national stage.

## The Live Well Build Well Auction

### \$189K RAISED AT HAMILTON FIELD DAYS - IBUILT'S PROUD CONTRIBUTION

Hamilton Field Days ended on a high note this year. The auction of Unit2go's tiny home raised an impressive \$189,100 for the Live Well, Build Well programme. This initiative is dedicated to helping builders and tradies stay mentally fit at work and in their personal lives.

IBuilt is proud to be a part of this effort. Our V-Grooved MDF, crafted from NZ-grown radiata pine, provided a sleek, stylish interior finish, while our CoreClad™ delivered a robust, durable exterior. It's great to support such a meaningful cause.



**Tamsyn Noakes**  
027 933 5668  
tamsyn@ibuilt.co.nz



**Kurt Van Breda**  
027 263 2545  
kurt@ibuilt.co.nz

## IBuilt: Team Updates

### TAMSYN NOAKES AND KURT VAN BRED A JOIN THE TEAM

We're thrilled to welcome Tamsyn Noakes to our team as our new Account Manager for the Auckland North region. With her solid background at ITM and Placemakers, Tamsyn brings a ton of industry know-how. We're excited to see her jump in.

We're also excited to welcome Kurt van Breda to the team as our Technical Support Representative. As a builder for many years, Kurt has a wealth of experience installing many of the products we offer and is a valuable part of our midfloor design and supply service.

### EMMA'S NEW ADDITION

Our customer service team member Emma has some wonderful news – she welcomed a beautiful baby into her family on July 6 2024. The whole IBuilt team is over the moon for her. To Emma and family, our warmest congratulations and best wishes for sleep!

While Emma is away, please contact Nite for any enquiries.

### A SAD FAREWELL

Martyn Vukovich passed away on 22nd June 2024 after a long battle with cancer. A long-standing team member, Martyn wasn't just an employee but a friend and mentor.

# Summary of expos/conferences

## THANK YOU TO OUR CUSTOMERS

We want to thank all our customers for letting us showcase our products at industry events such as the Buildlink Expo, ITM LBP Training Days and the Mitre10 Expo.

It was an honour and a testament to our team's hard work and dedication to be nominated for the Best Supplier Award at the ITM Conference. We're excited about what's ahead and couldn't do it without the support of our customers and partners.



Tech Info Line: 0800-022-352



Phone: +64-9-268 6540



Email: [sales@ibuilt.co.nz](mailto:sales@ibuilt.co.nz)



[www.ibuilt.co.nz](http://www.ibuilt.co.nz)

# NZWOOD

NEW ZEALAND WOOD PRODUCTS LIMITED